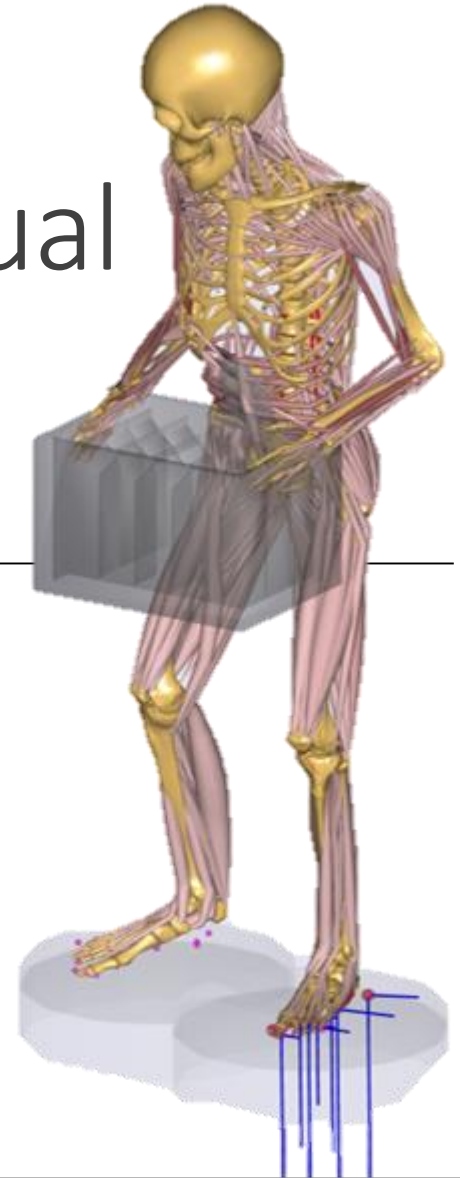


The webcast will begin shortly...

Musculoskeletal modeling of manual materials handling in the Danish supermarket sector

July 28th, 2020



Outline

- General introduction to the AnyBody Modeling System
- Presentation by Sebastian Laigaard Skals
 - *Musculoskeletal modeling of manual materials handling in the Danish supermarket sector*
- Question and answer session



Presenter:

Sebastian Laigaard Skals
Ph.D. student at the National Research Centre for the Working Environment (NRCWE) / Aalborg University, Denmark



Host:

Kristoffer Iversen
R&D Engineer
AnyBody Technology

Control Panel

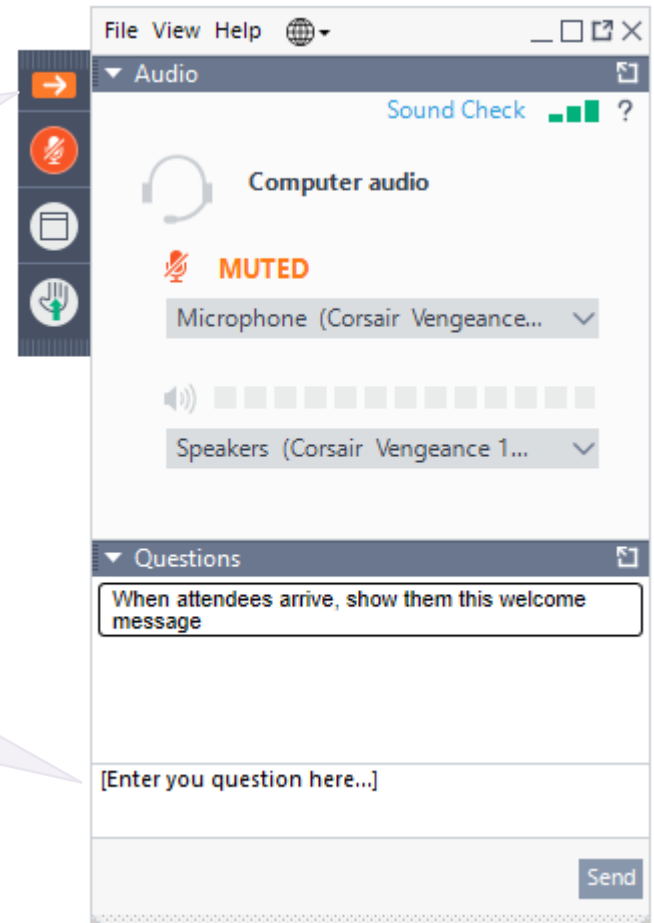
The Control Panel appears on the right side of your screen.

Submit questions and comments via the Questions panel.

Questions will be addressed at the end of the presentation. If your question is not addressed, we will do so by email.

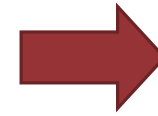
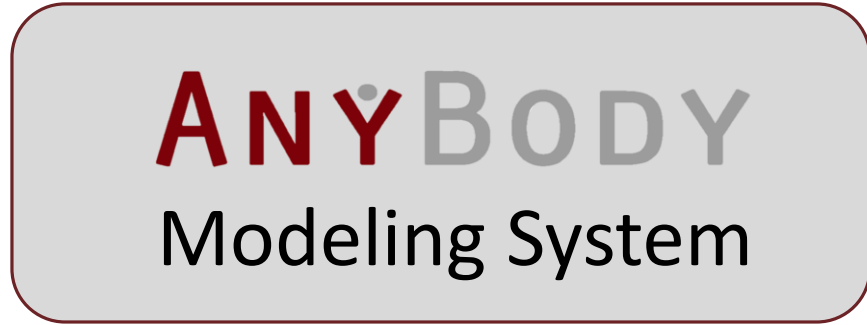
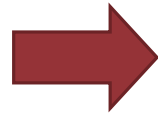
Expand/Collapse the Control Panel

Ask a question during the presentation



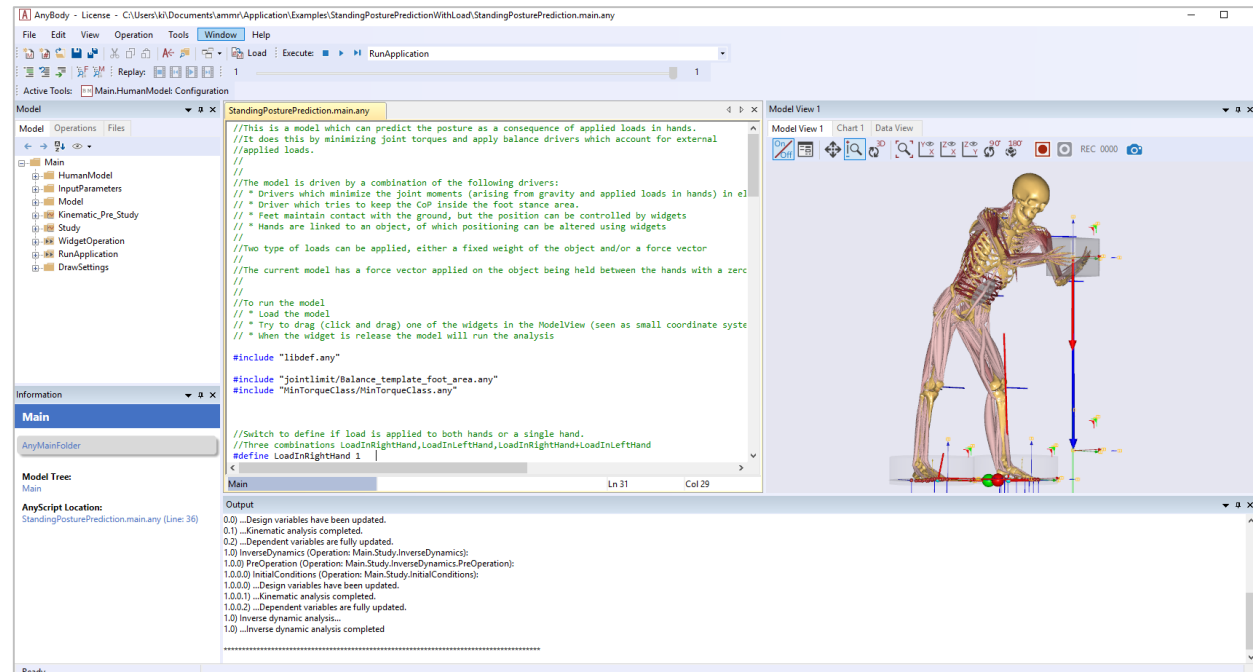
Musculoskeletal Simulation

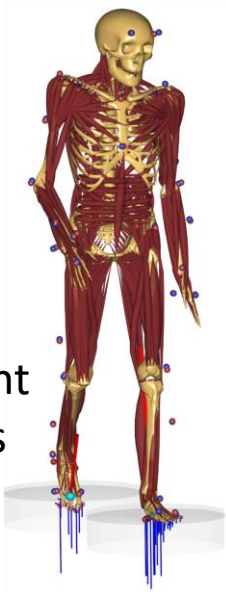
Motion Data
Kinematics and Forces



Body Loads

- Joint moments
- Muscle forces
- Joint reaction forces

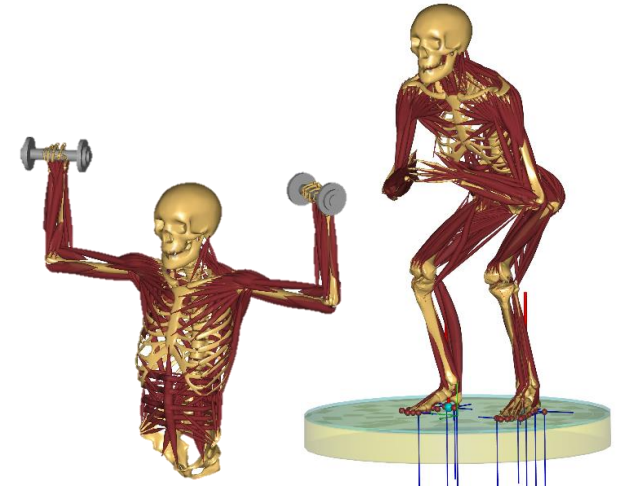




Movement
Analysis



Product optimization design

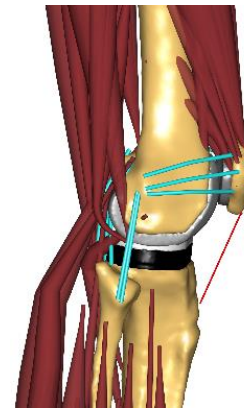
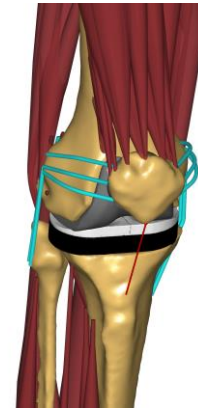
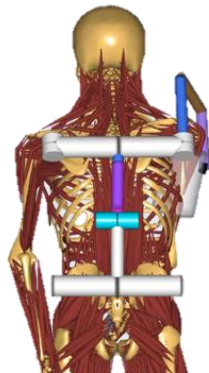


Sports

ANYBODY
Modeling System

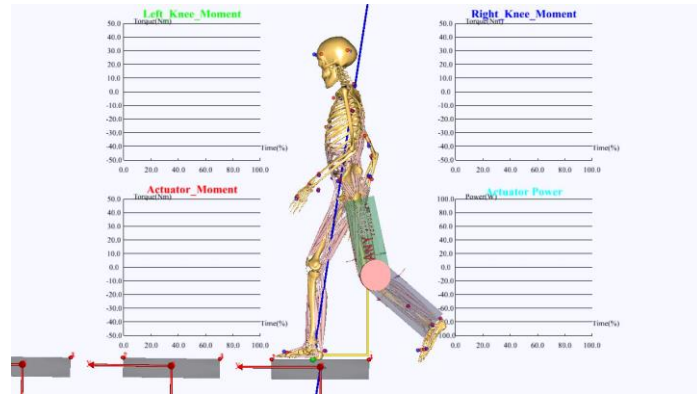
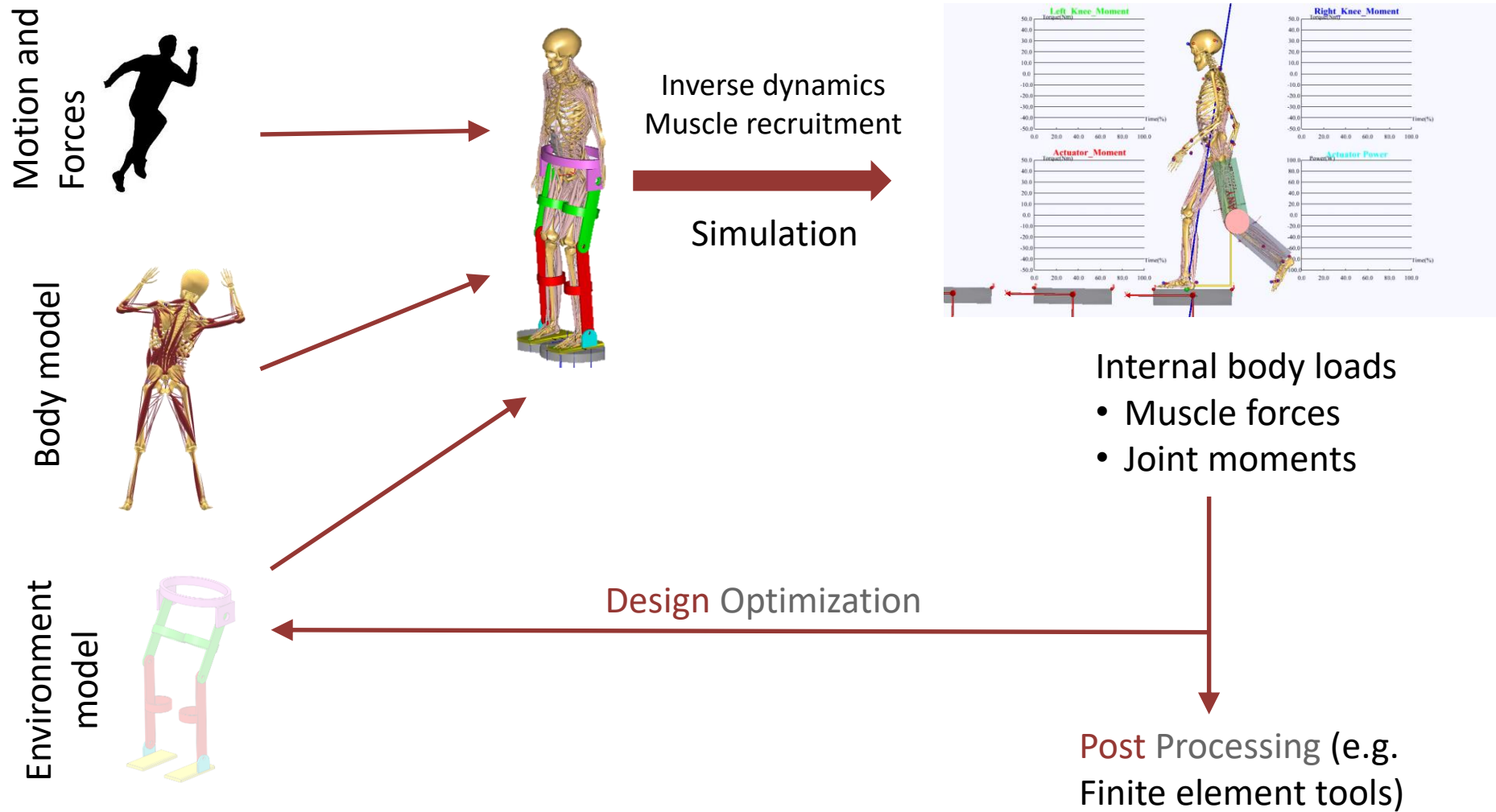


Assistive
Devices



Orthopedics
and rehab

AnyBody Modelling System



Musculoskeletal modeling of manual materials handling in the Danish supermarket sector

By Sebastian Laigaard Skals,
Ph.D. student at NRCWE /
Aalborg University, Denmark



Musculoskeletal modeling of manual materials handling in the Danish supermarket sector

Sebastian Skals^{1,2}, Rúni Bláfoss^{1,3}, Michael S. Andersen⁴, Mark de Zee¹ & Lars L. Andersen^{1,2}

¹National Research Centre for the Working Environment, Copenhagen, Denmark

²Department of Health Science and Technology, Aalborg University, Aalborg, Denmark

³Department of Sports Science and Clinical Biomechanics, University of Southern Denmark, Odense, Denmark

⁴Department of Materials and Production, Aalborg University, Aalborg, Denmark

Introduction

Musculoskeletal disorders in the supermarket sector

Work-related musculoskeletal disorders (WRMD) are highly prevalent in the supermarket sector^{1,2}

- Lower back
- Shoulders
- Wrists

Majority of workers are primarily engaged in the receiving, stocking and re-arranging of groceries

Not much is known about the biomechanical loads these workers are subjected to during their daily work

However, it is well-documented that manual materials handling (MMH) is associated with the development of WRMD, particularly to the lower back

Introduction

Assessing the risk of injury during MMH

Task-based analysis of MMH has involved many different approaches

- Self-reports
- Observational methods
- Direct measurements (e.g. EMG or motion analysis)
- Biomechanical models

Several ergonomic tools have been developed to assess injury risks during MMH, as for instance:

- NIOSH Lifting Equation³
- Snook Lifting Tables⁴

...many of which apply biomechanical models to estimate joint loads

Introduction

Limitations of biomechanical models and recent advances

Simplified exposure and biomechanical models (static or quasi-static):

- Loads are only known for idealized lifting situations
- Considerable underestimation of loads compared with dynamic models

Musculoskeletal modelling may be the tool to overcome these challenges:

- Prediction of ground reaction forces
- Inertial motion capture (*Xsens Technologies B.V.*)

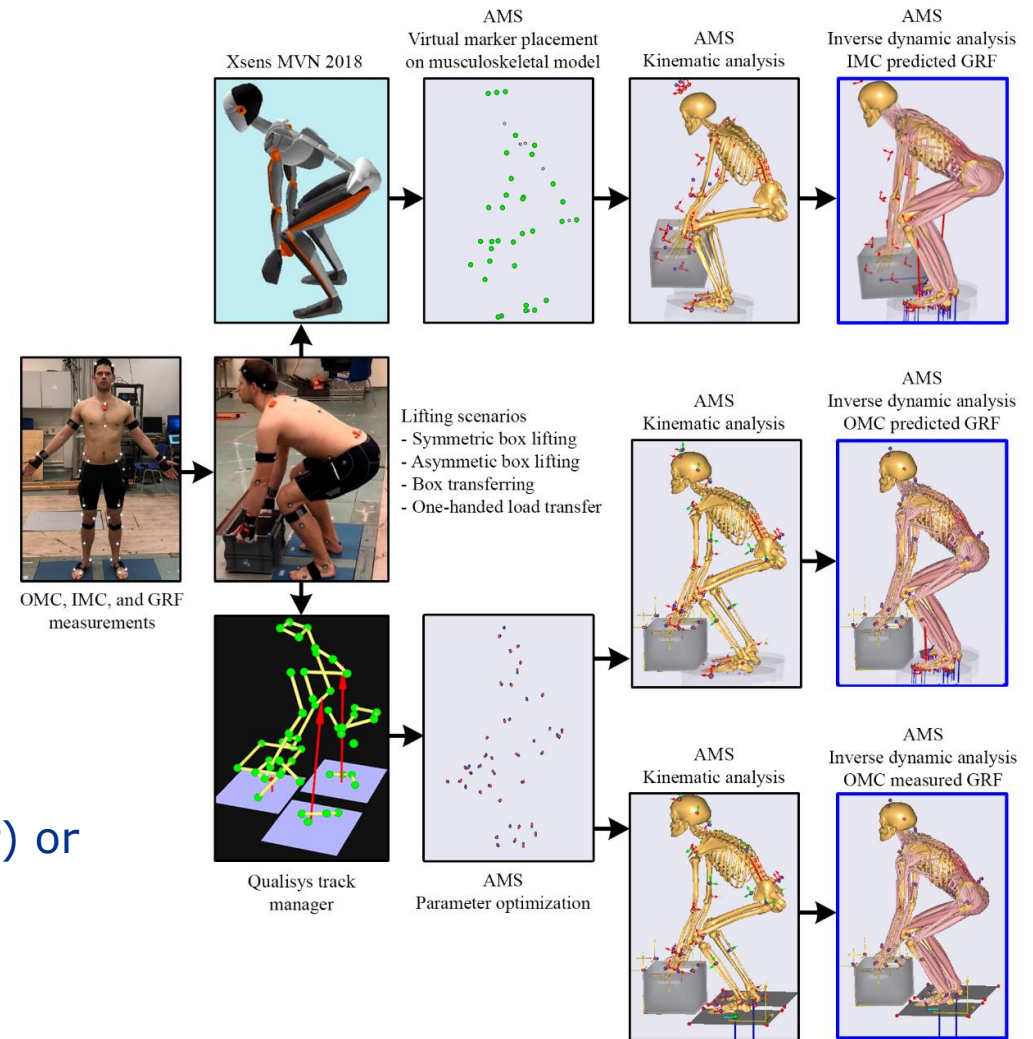
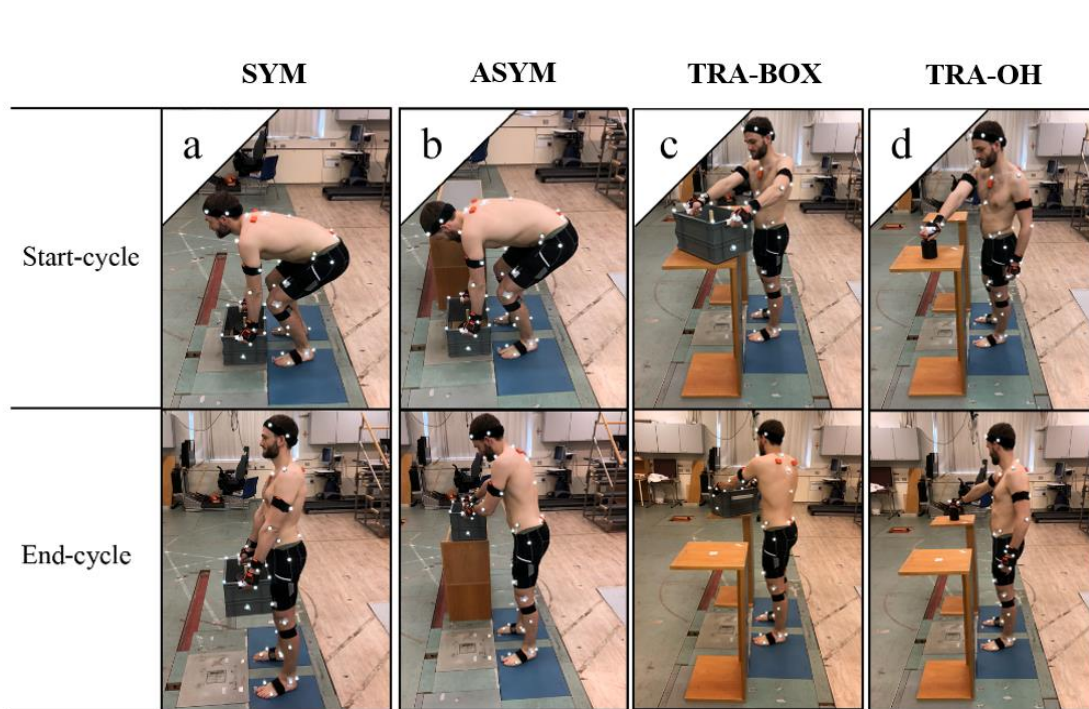
AIM:

Identify work tasks and ergonomic exposures that may pose a risk for the development of WRMD in the supermarket sector based on state-of-the art methods for inertial-based motion analysis and musculoskeletal modelling.



Methods

Evaluate methodology against silver standard



See previous webcast (<https://www.youtube.com/watch?v=QwA1hnqpqXgor>) or journal paper⁵ for more information.

Methods

Experimental procedures

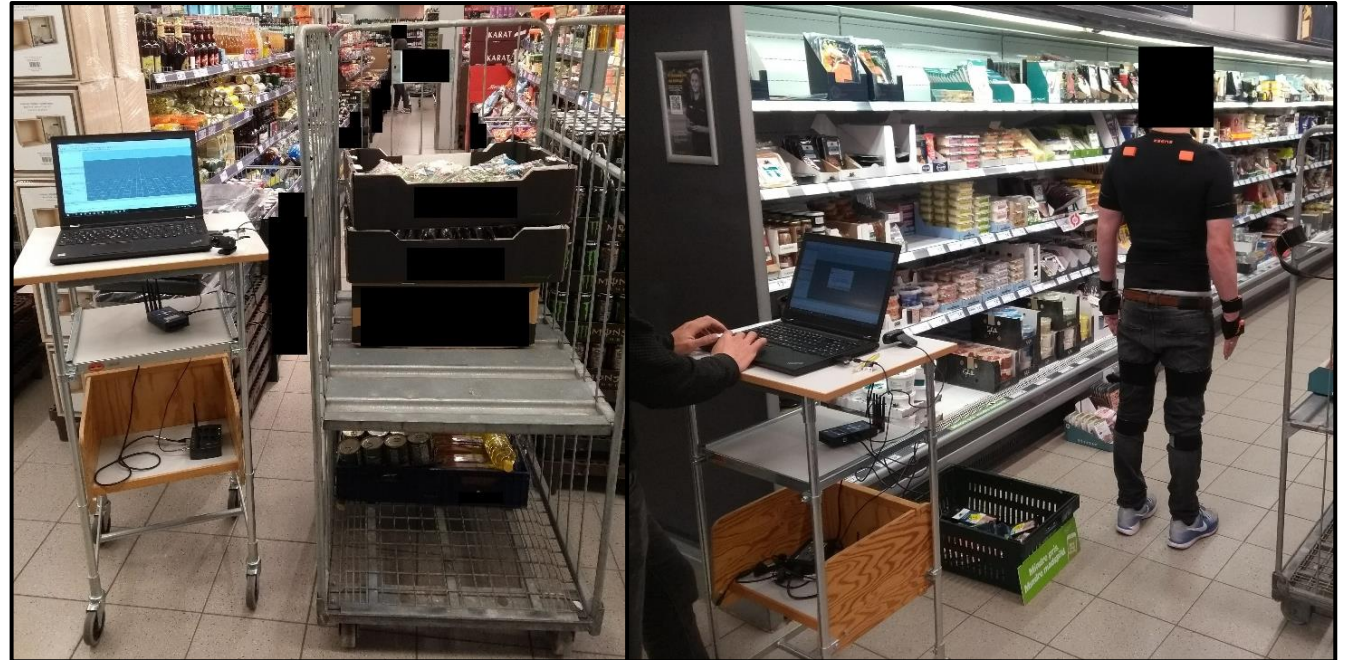
17 healthy full-time workers from two supermarkets were recruited

12 common MMH tasks were included in the study, e.g. the handling of

- Bananas
- Milk crates
- Cucumbers

Multiple start and end positions were included

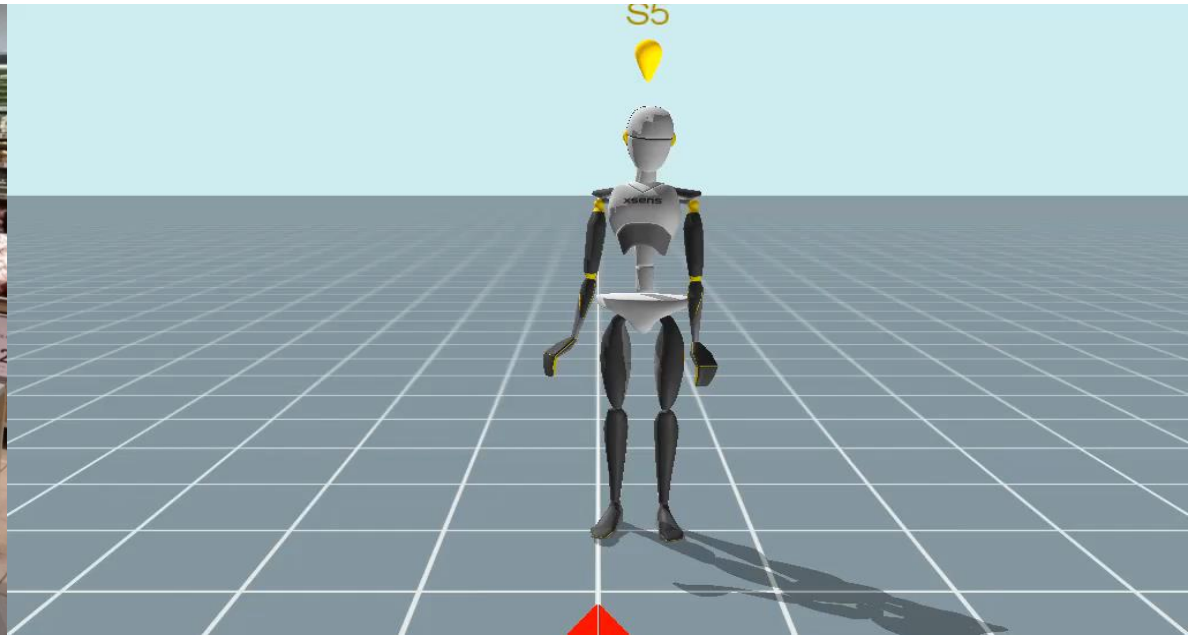
- 50 lifting conditions
- 4 repetitions per condition



Methods

Experimental procedures

Full-body kinematics obtained using the Xsens MVN Awinda wireless motion-tracker

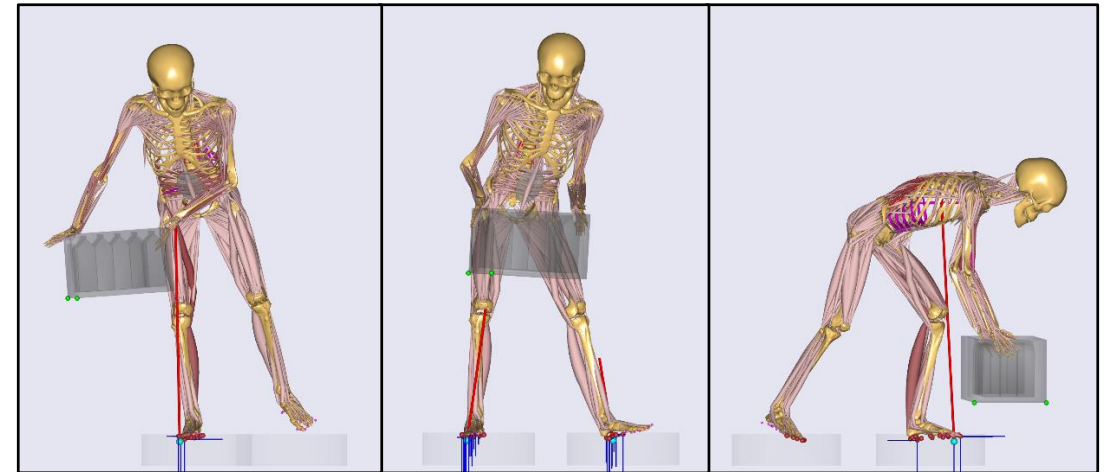
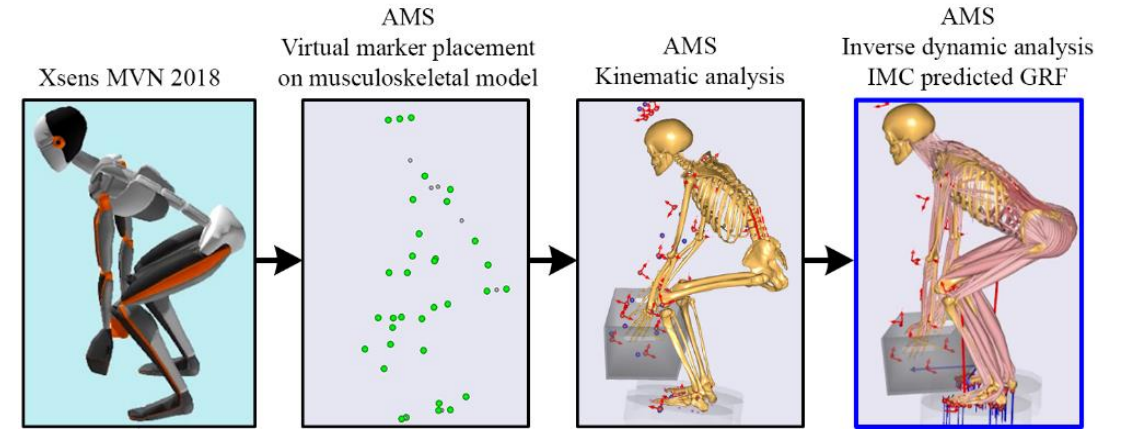


Methods

Musculoskeletal modelling

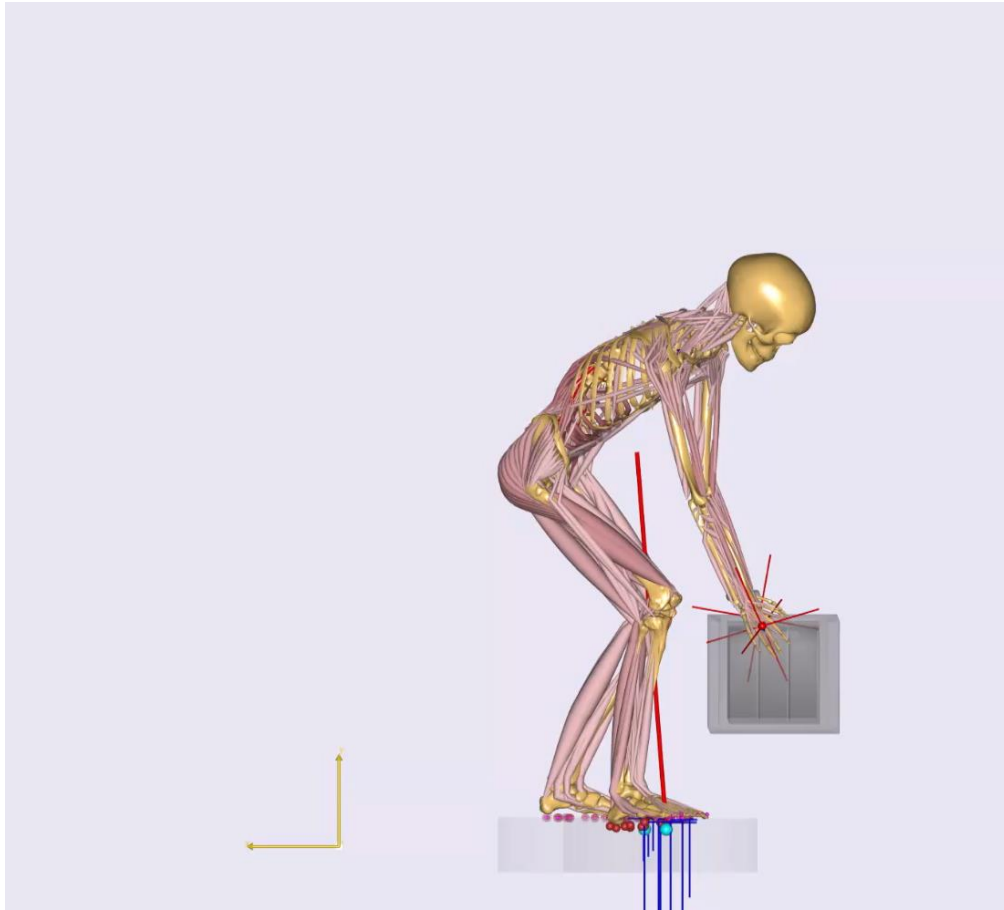
Models developed in The AnyBody Modeling System 7.2 based on the BVH_Xsens template from AMMR 2.2.3

- Scaling based on manual measurements
- Kinematics solved using concept of virtual markers⁶
- GRFs predicted using embedded tool in AnyBody⁷
- Box kinematics driven by position of hands
- Hand-box contact modelled with muscle-like contact elements

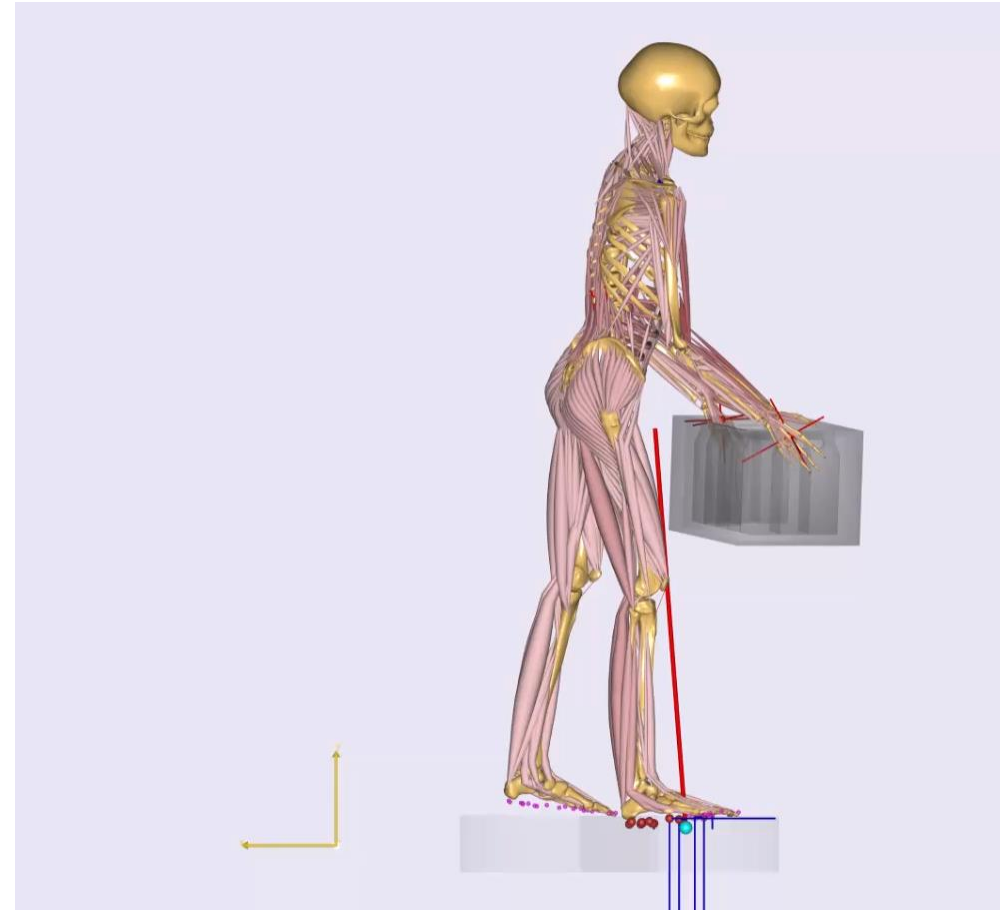


Results

Milk-LowToLow

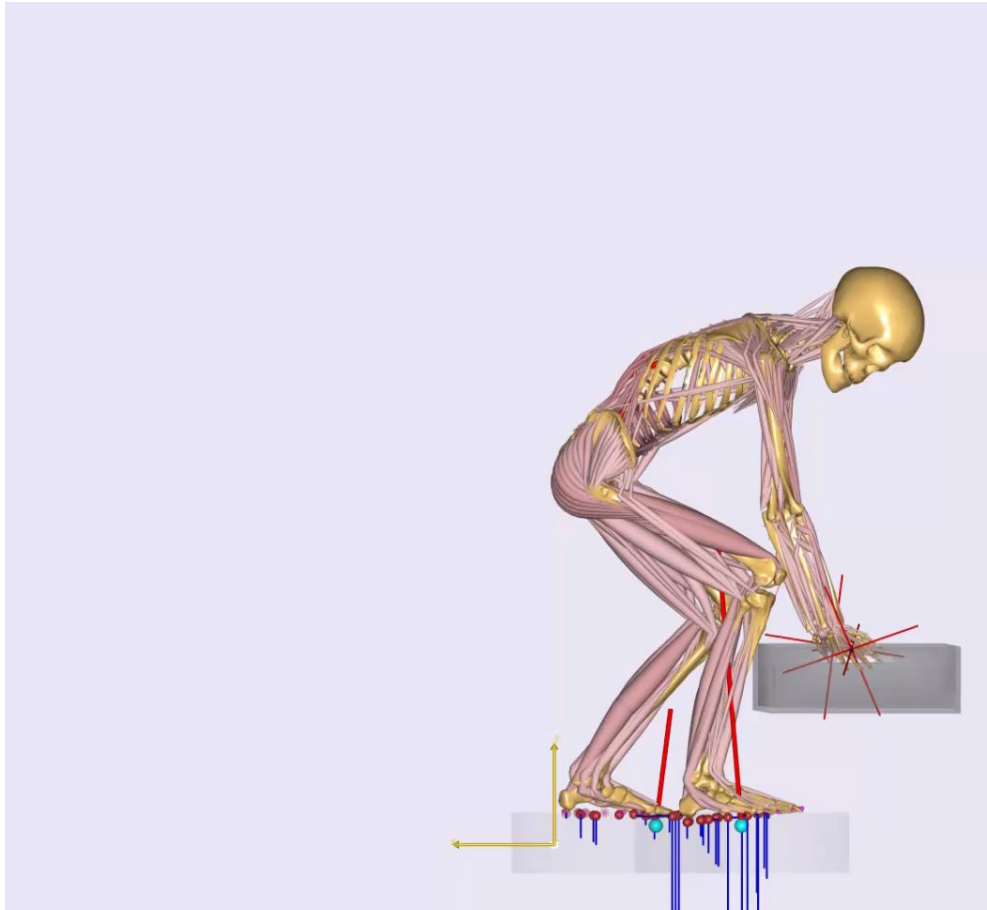


Milk-HighToHigh

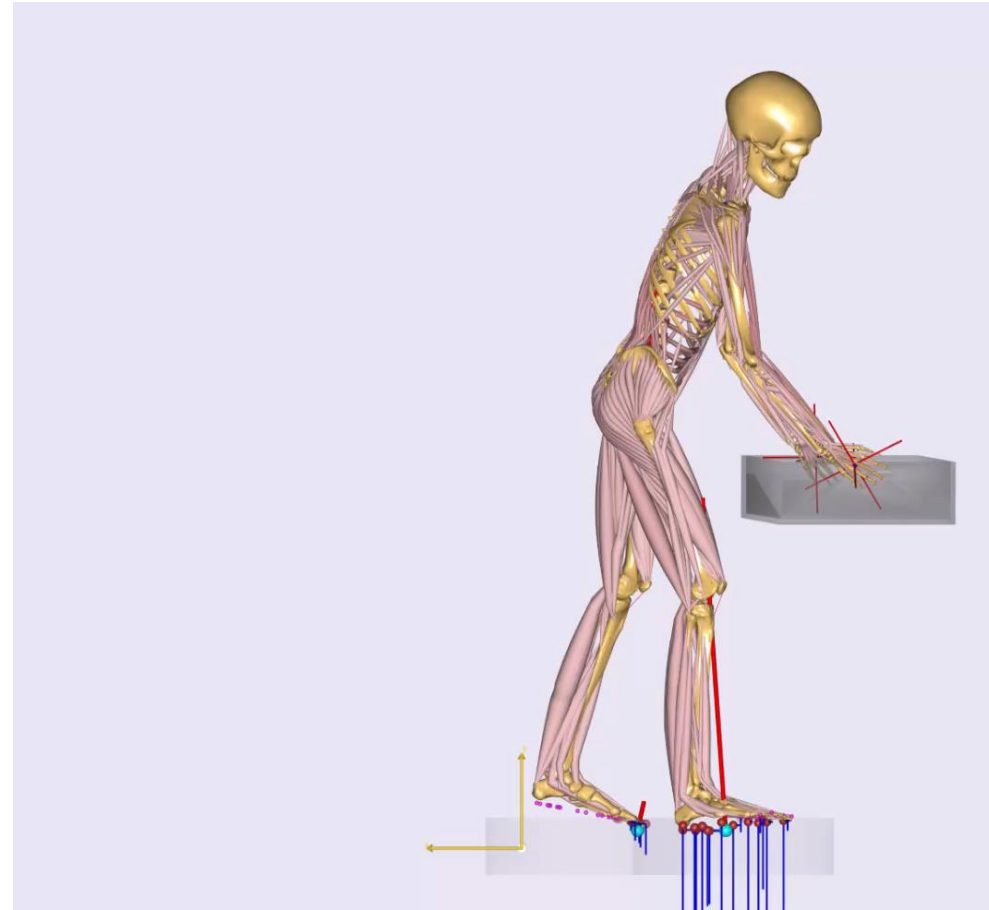


Results

Bread-LowToLow

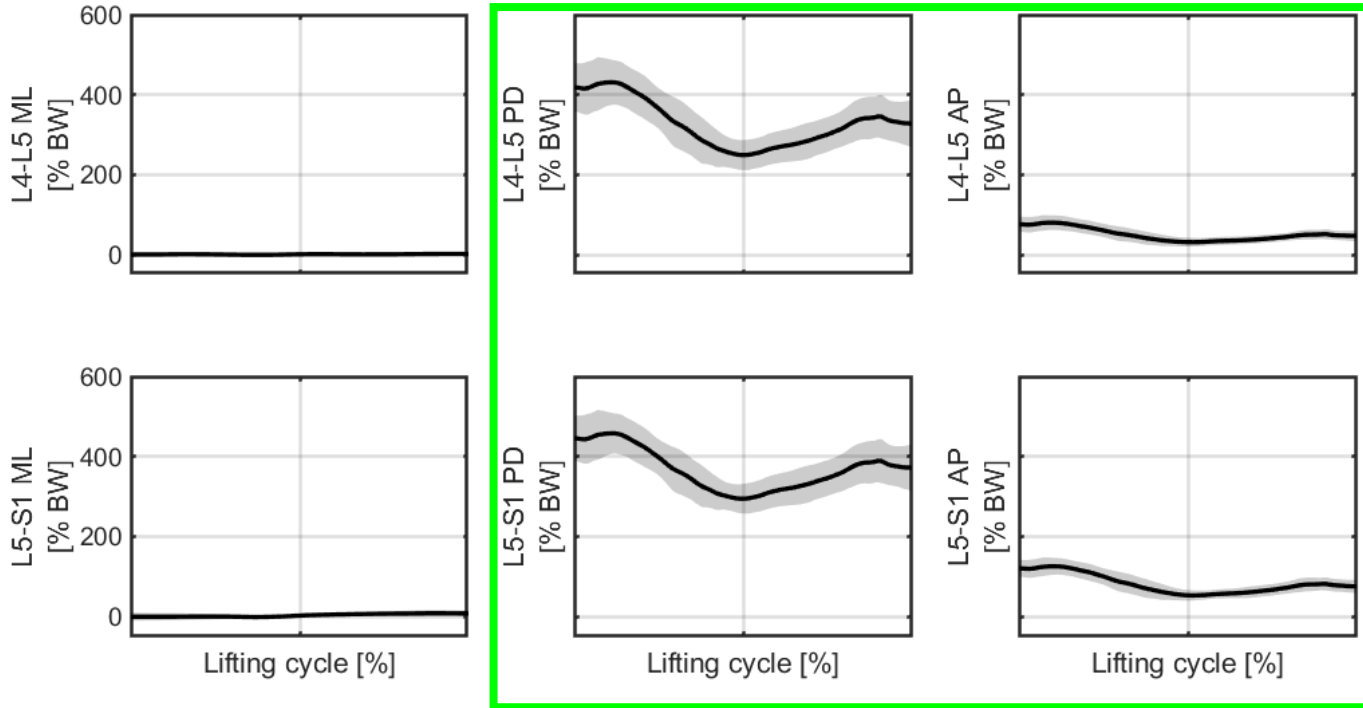


Bread-HighToHigh

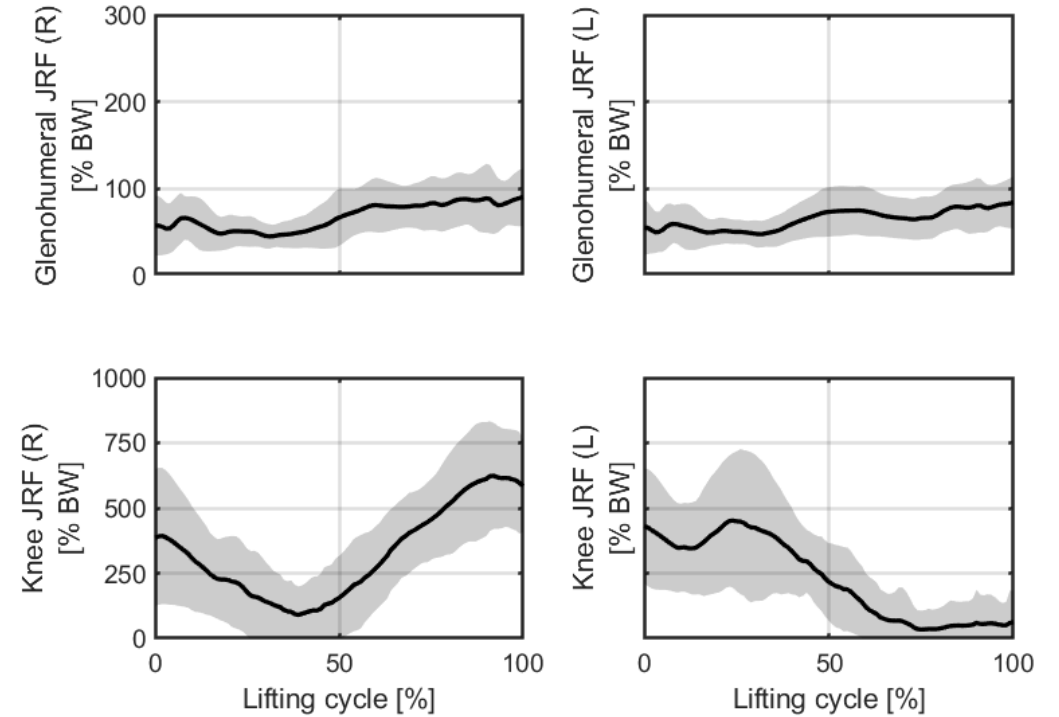


Results

MD3-SP1-H3 / Milk-LowToHigh

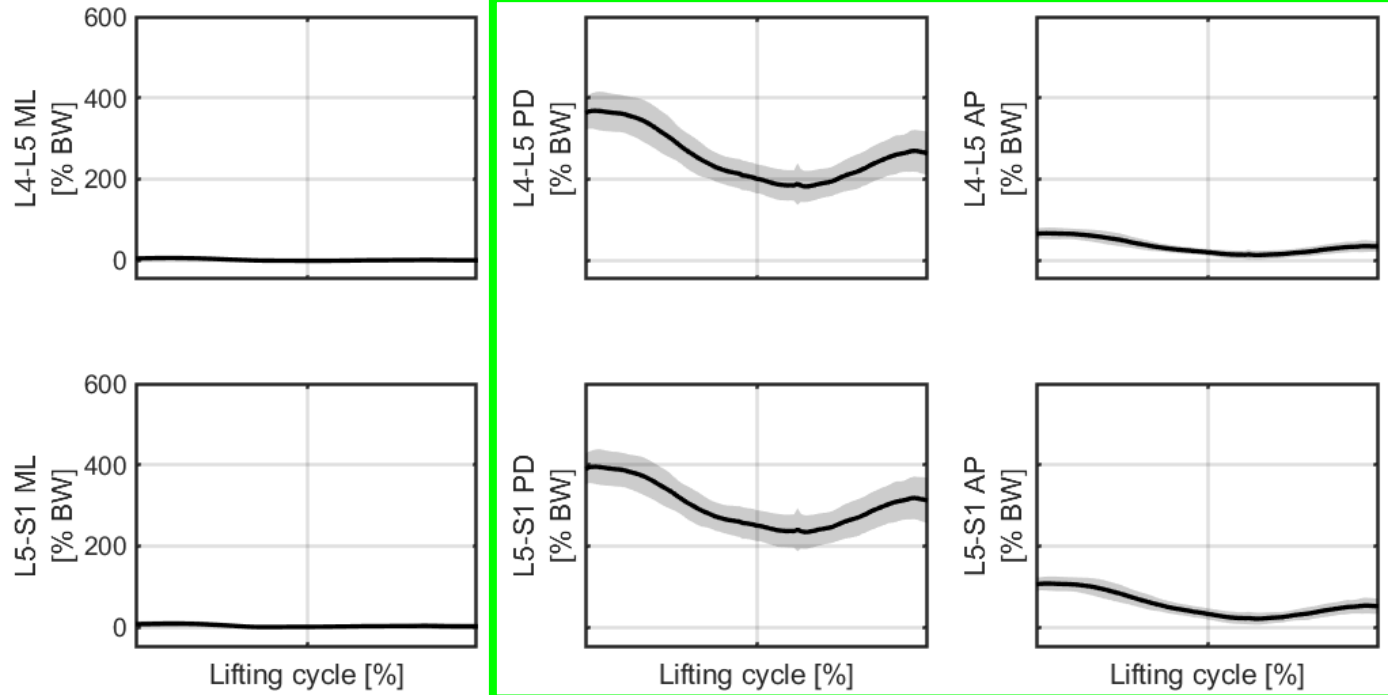


MD3-SP1-H3 / Milk-LowToHigh

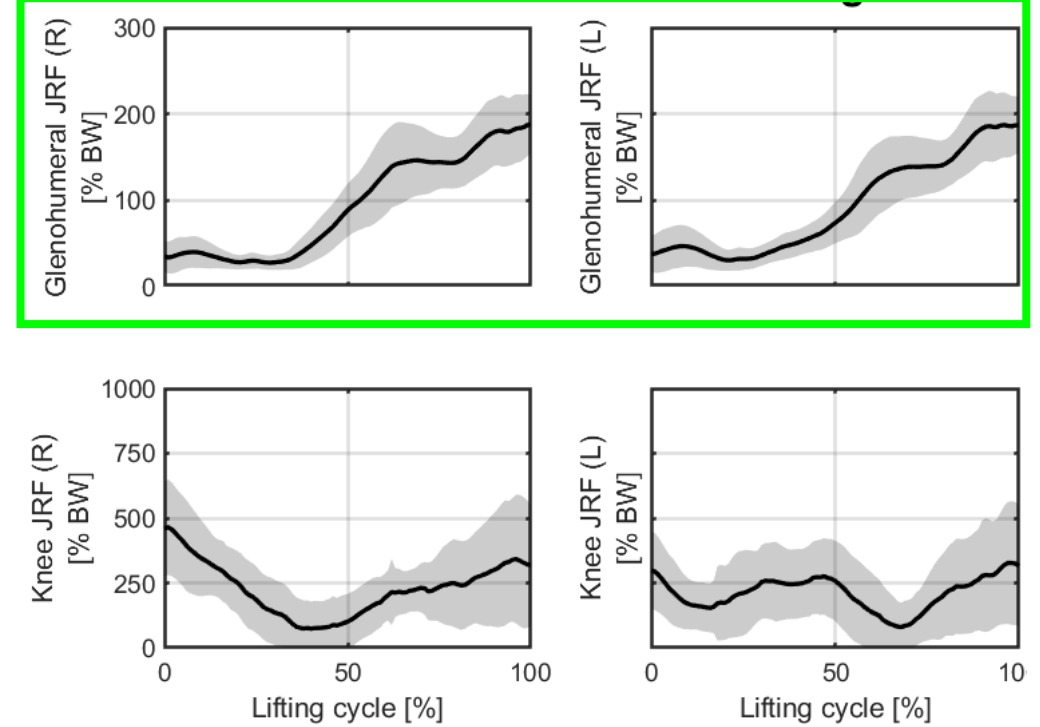


Results

BR1-SP1-H3 / Bread-LowToHigh



BR1-SP1-H3 / Bread-LowToHigh



Results

L5-S1 axial compression force			L5-S1 anteroposterior force	
Rank	Task	Newton	Task	Newton
1	Bananas-LowToLow	3961 (3734 – 4188)	Bananas-LowToLow	1114 (1036 – 1191)
2	Bananas-HighToLow	3862 (3635 – 4088)	Milk-LowToLow	1035 (958 – 1113)
3	Milk-LowToLow	3627 (3401 – 3854)	Bananas-HighToLow	1020 (942 – 1097)
4	Milk-LowToMid	3584 (3357 – 3811)	Milk-LowToMid	992 (915 – 1069)
5	Milk-LowToHigh	3548 (3322 – 3775)	Milk-LowToHigh	985 (908 – 1062)
6	Milk-HighToLow	3516 (3289 – 3742)	Milk-HighToLow	964 (887 – 1041)
7	Milk-HighToMid	3350 (3123 – 3577)	Cucumbers-LowToHigh	901 (824 – 978)
8	Cucumbers-LowToHigh	3215 (2988 – 3442)	Cucumbers-LowToMid	888 (810 – 966)
9	Cucumbers-LowToMid	3170 (2942 – 3398)	Bread-LowToLow	858 (781 – 935)
10	Bread-LowToLow	3060 (2833 – 3287)	Bread-MidToLow	848 (770 – 925)

Compression tolerance limit: 3400 N^{3,8}

Anteroposterior shear tolerance limit: 1000 N^{9,10}

Discussion

Main findings

- First study to estimate dynamic spinal loading based on field measurements
- Spinal loads exceed tolerance limits for bananas (20.2 kg), milk (17.3 kg) and cucumbers (10.2 kg)
- Weight, start and end position all had considerable influence on spinal forces
- Lifting cucumbers (10.2 kg) to high shelves resulted in the highest shoulder forces
- The weight of the merchandise was the main predictor of high knee forces

Discussion

Practical implications

- Handling of milk crates and bananas should be avoided
- Bread (7.9 kg) and cucumbers (10.2 kg) should only be placed below shoulder height or stocked individually
- Highest shelves should be lowered to avoid working above shoulder height
- Technical assistive devices are advised to limit hazardous exposures
- Individual factors (age, sex and health) should be considered in relation to job demands

Discussion

Limitations and future applications

- Trunk forward flexion angle and anteroposterior shear force underestimated considerably
- Very time-consuming approach that require specialized skills
- Only estimates acute loading, but accumulated loads are important
- Errors in kinematic data led to the exclusion of a large proportion of the collected trials

- Estimating dynamic joint loads based on field measurements is a great leap forward
- Abundance of information providing valuable reference material for industrial stakeholders

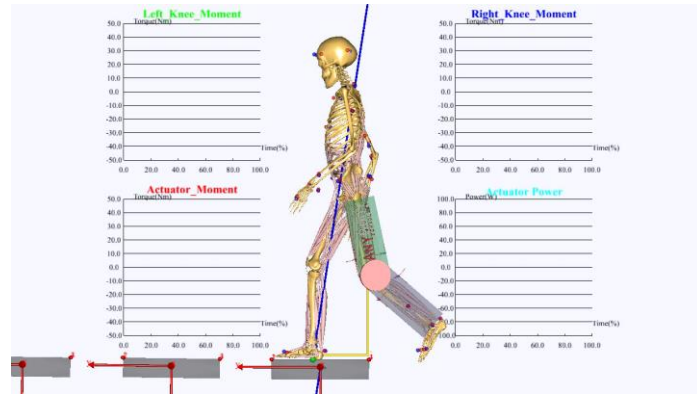
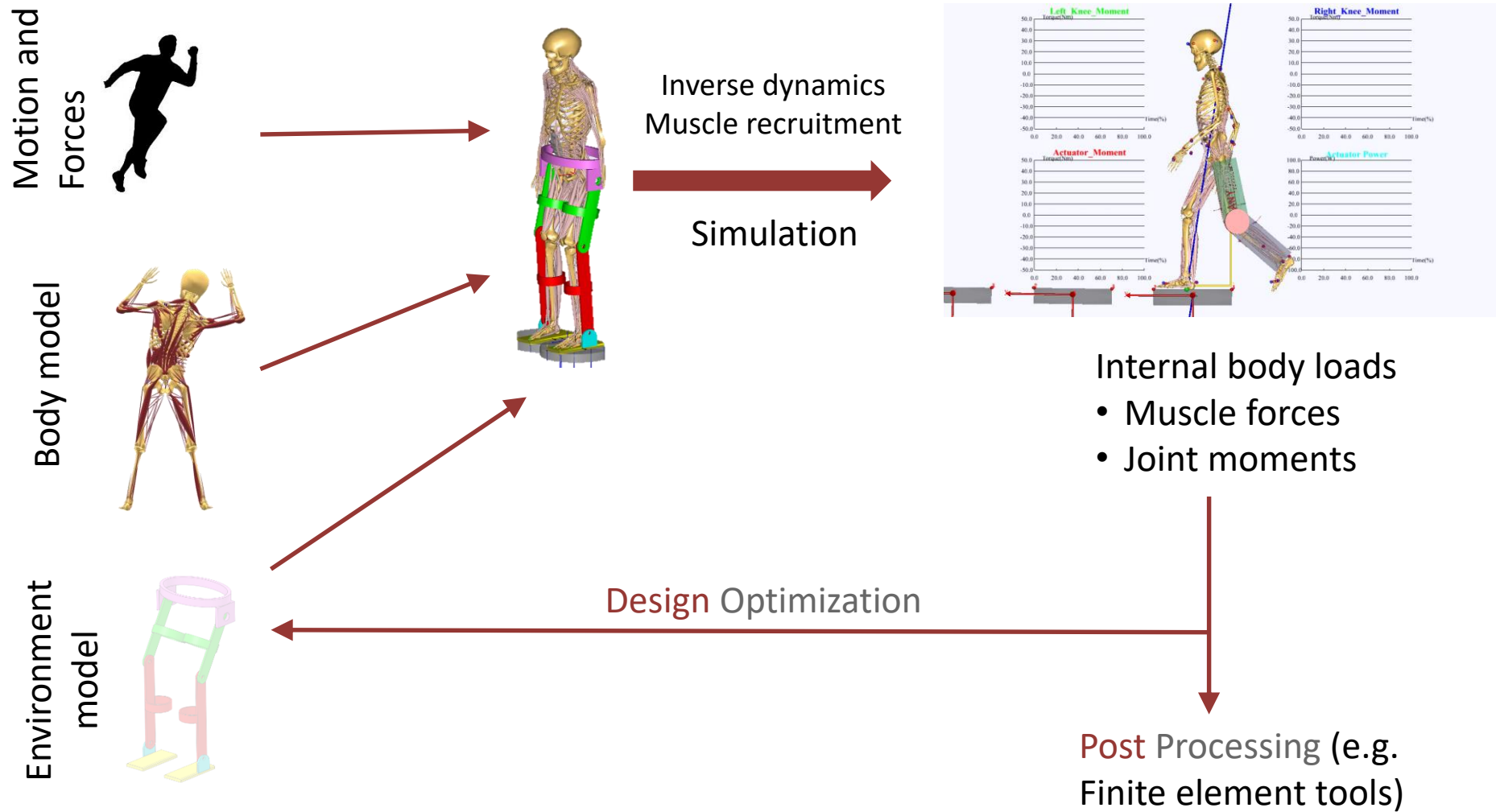
References

... and thank you for your time!

1. Forcier L, Lapointe C, Lortie M, Buckle P, Kuorinka I, Lemaire J, et al. Supermarket workers: Their work and their health, particularly their self-reported musculoskeletal problems and compensable injuries. *Work* 2008;30(4):493-510.
2. Anton D, Weeks DL. Prevalence of work-related musculoskeletal symptoms among grocery workers. *Int. J. Ind. Ergonomics* 2016;54:139-45. DOI: 10.1016/j.ergon.2016.05.006.
3. Waters TR, Putz-Anderson V, Garg A, Fine LJ. Revised NIOSH equation for the design and evaluation of manual lifting tasks. *Ergonomics* 1993;36(7):749-76. DOI: 10.1080/00140139308967940.
4. Snook SH, Ciriello VM. The design of manual handling tasks: revised tables of maximum acceptable weights and forces. *Ergonomics* 1991;34(9): 1197-1213.
5. Skals S, Rasmussen K, Bendtsen K, Yang J, Andersen M. A musculoskeletal model driven by dual Microsoft Kinect Sensor data. *Multibody Syst. Dyn.* 2017;41(4):297-316. DOI: 10.1007/s11044-017-9573-8
6. Karatsidis A, Bellusci G, Schepers HM, de Zee M, Andersen MS, Veltink PH. Estimation of ground reaction forces and moments during gait using only inertial motion capture. *Sensors* 2017;17(1):75. DOI: 10.3390/s17010075.
7. Larsen FG, Svenningsen FP, Andersen MS, de Zee M, Skals S. Estimation of spinal loading during manual materials handling using inertial motion capture. *Ann. Biomed. Eng.* 2020;48(2):805-21. DOI: 10.1007/s10439-019-02409-8.
8. Nelson GS, Wickes H, English JT. *Manual Lifting: The NIOSH Work Practices Guide for Manual Lifting Determining Acceptable Weights of Lift*. NIOSH Technical Report No. 81-122. Cincinnati, OH, USA: U.S. Department of Health and Human Services; 1981.
9. McGill SM, Norman RW, Yingling VR, Wells RP, Neumann P. Shear happens! Suggested guidelines for ergonomists to reduce the risk of low back injury from shear loading. In: *Proceedings of the 30th annual conference of the human factors association of Canada: 1998 Oct; Mississauga, Ontario, Canada.*
10. Gallagher S, Marras WS. Tolerance of the lumbar spine to shear: a review and recommended exposure limits. *Clin. Biomech.* 2012;27(10):973-8. DOI: 10.1016/j.clinbiomech.2012.08.009.

Acknowledgements: this work was supported by the Independent Research Fund Denmark, grant no. DFF-7026-00099 to S. Skals

AnyBody Modelling System




www.anybodytech.com

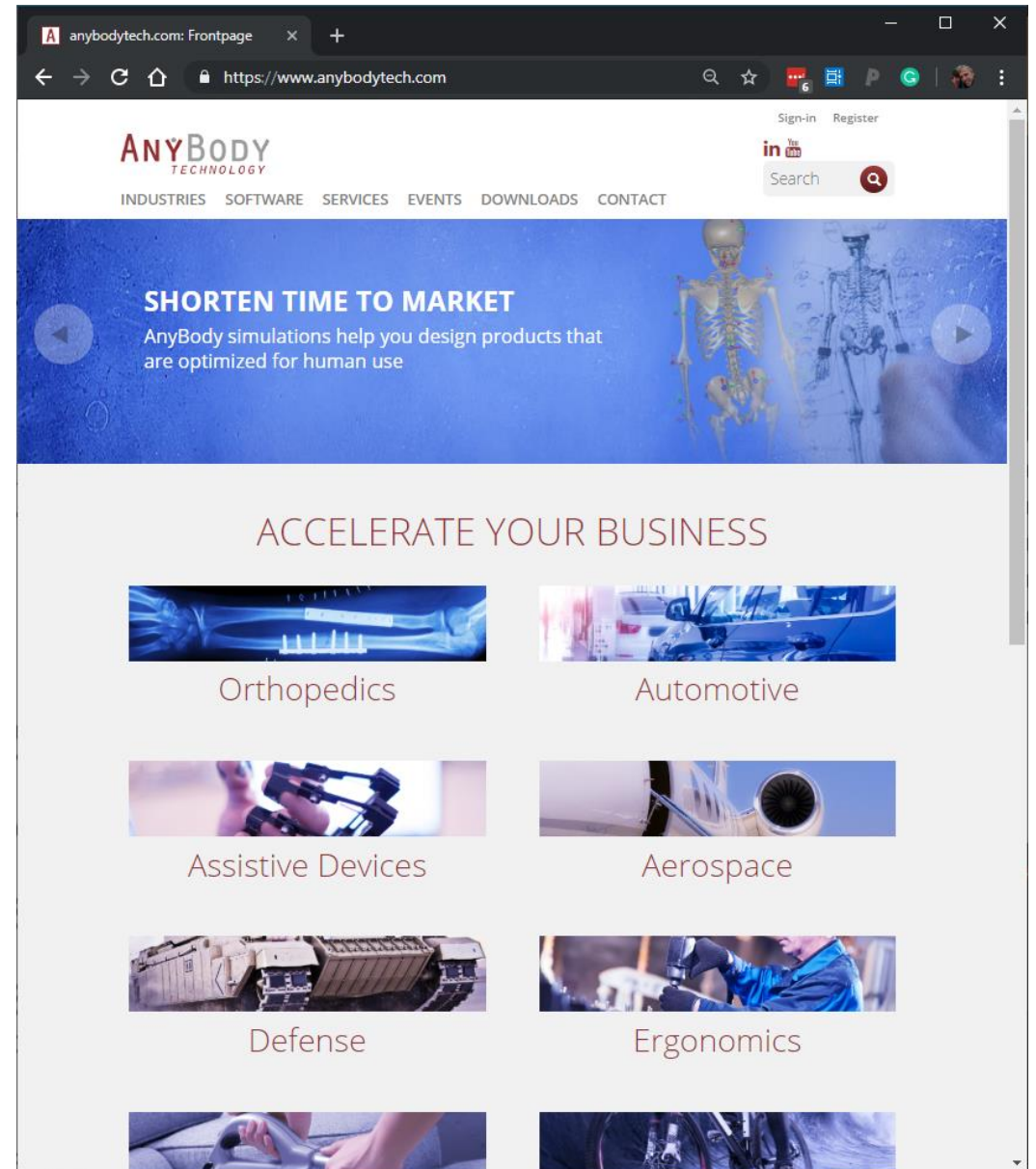
- Events, Dates, Publication list, ...

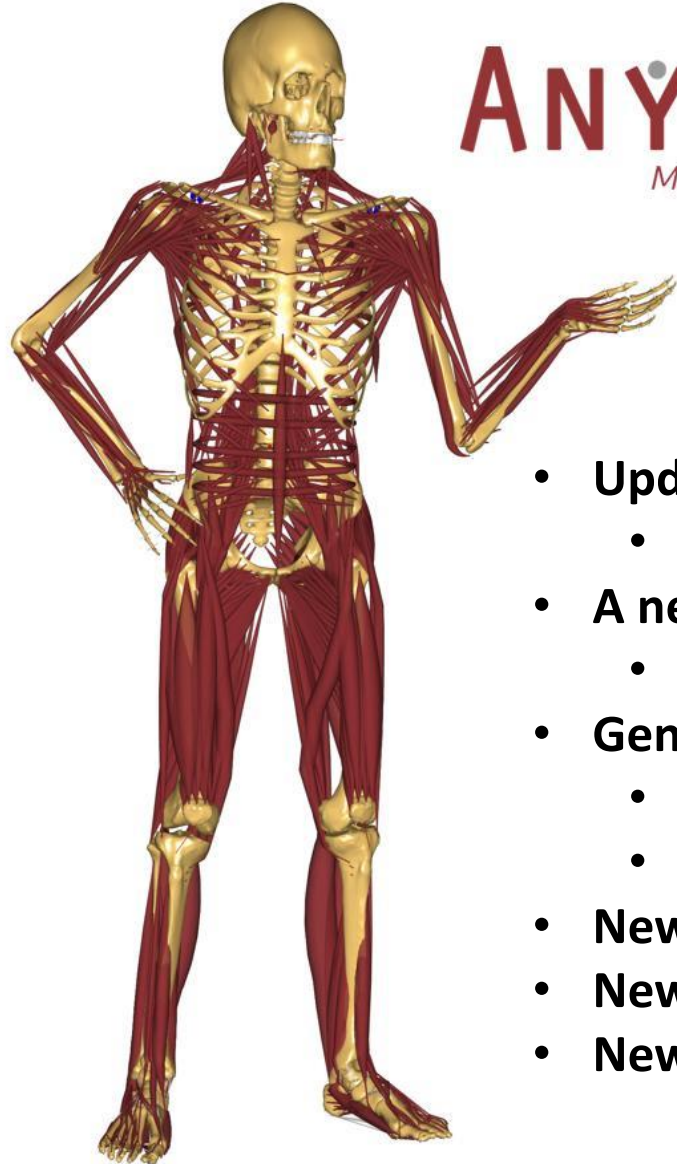
www.anyscript.org

- Wiki, Repositories, Forum

 **Meet us?** Send email to sales@anybodytech.com

 **Want to present?** Send email to ki@anybodytech.com





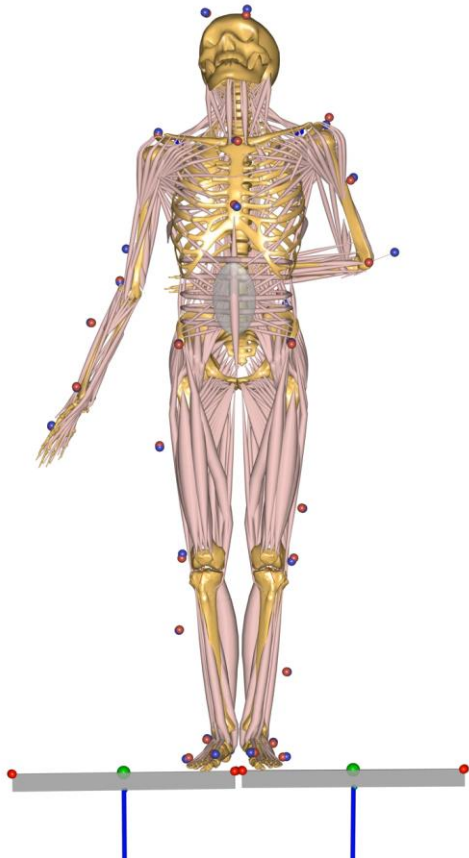
ANYBODY™

MODELING SYSTEM V. 7.3

- **Updated model repository AMMR v. 2.3**
 - A large-scale gait MoCap example
- **A new faster experimental wrapping algorithm, 5-100 faster than the previous**
 - Inspired by the work of Lloyd, Stavness and Fels (2019).
- **General faster load and simulation times**
 - Load time for models is reduced by 25%
 - Simulation time is also faster in all models which includes tri-axial ellipsoids.
- **New improved model view performance**
- **New class list**
- **New reference manual**

See more: <https://forum.anyscript.org/t/anybody-modeling-system-v-7-3-0-released/5706>

Time for questions:



AnyScript forum

https://forum.anyscript.org

ANYSCRIPT FORUM Sign Up Log In

all categories all tags **Categories** Latest Top

Category	Topics	Latest
Main Forum This is the category for discussion about the AnyBody Modeling System and problems with models	19 / month	Z Error when loading C3D model 1h Main Forum
Announcements Big and small news AnyBody Modeling System, and Model Repository (AMMR)	2	Y Misalignment of robot joint and human joint 8h Main Forum
Blog comments This category is for collecting discussions from blog posts on AnyScript.org . Do not create new topics in this category. They are created automatically when people comment on blog posts.	1 / month	E Changing the TrailFileName with AnyPy Tools 21h Main Forum
		Request for c3d2any.exe and gaitapplication2.exe 9d Main Forum
		Node Orientation 9d Main Forum kinematics